

UTHERM Roof B

Insulation board
for roofs

Roof B is a PIR insulation board finished on both sides with a gas open bituminized glassfleece.

Application Insulation boards for flat and low sloped roofs

Insulation Polyisocyanurate (PIR)
Declared lambda-value (λ_D):
0,027 W/m.K (d < 80 mm)
0,026 W/m.K (80 mm ≤ d < 120 mm)
0,024 W/m.K (d ≥ 120 mm)

Facing B : bituminized glassfleece on both sides

Dimensions Standard: 1200 x 600 mm

Edge finish Straight on the 4 sides

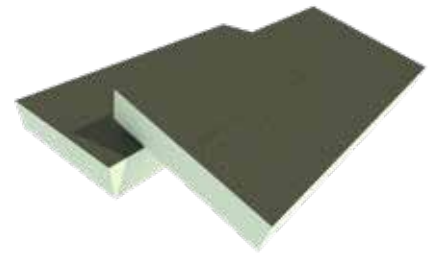


lambda-value:

0,024

0,027

W/m.K

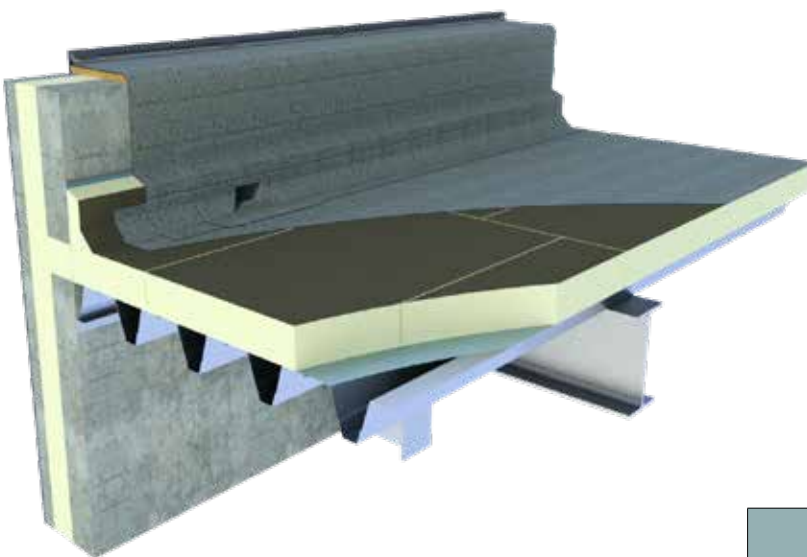


Insulation-thickness [mm]	R _{D INSUL} value [m ² K/W] CE	Boards per pack	m ² per pack	Boards per pallet	m ² per pallet	m ² full load [= 22 pal.]	In stock	On demand*
Roof B: 1.200 x 600 mm								
30	1,10	16	11,52	160	115,2	2.534,40	✓	
40	1,45	12	8,64	120	86,40	1.900,80	✓	
50	1,85	10	7,20	100	72,00	1.584,00	✓	
60	2,20	8	5,76	80	57,60	1.267,20	✓	
70	2,55	7	5,04	70	50,40	1.108,80		✓
80	3,05	6	4,32	60	43,20	950,40	✓	
90	3,45	5	3,60	50	36,00	792,00		✓
100	3,80	5	3,60	50	36,00	792,00	✓	
110	4,20	4	2,88	40	28,80	633,60		✓
120	5,00	4	2,88	40	28,80	633,60	✓	
140	5,80	3	2,16	36	25,92	570,24		✓
160	6,65	3	2,16	30	21,60	475,20		✓
180	7,50	2	1,44	28	20,16	443,52		✓
200	8,30	2	1,44	24	17,28	380,16		✓

* Minimum order quantities and special conditions upon consultation

TECHNICAL PROPERTIES

Declared thermal conductivity : λ_D according to EN 13165:2012+A2:2016	0,027 W/m.K (d < 80 mm) 0,026 W/m.K (80 mm ≤ d < 120 mm) 0,024 W/m.K (d ≥ 120 mm)
Compressive strength at 10% deformation : CS(10/Y)150 according to EN 826	≥ 150 kPa (1,5 kg/cm ²)
Tensile strength perpendicular to the faces	TR80 ≥ 80 kPa
Dimensional stability 48h, 70°C, 90%RH 48h, -20°C	DS(70,90)3: $\Delta\epsilon_{l,b} \leq 2$ / $\Delta\epsilon_d \leq 6$ DS(-20,-)1: $\Delta\epsilon_{l,b} \leq 1$ / $\Delta\epsilon_d \leq 2$
Deformation under compressive load and temperature conditions	DLT(2) ≤ 5%
Density of the PIR foam	32 kg/m ³ ± 3 kg/m ³
Water vapour transmission resistance of the PIR foam : μ	50-100
Reaction to fire class	F according to EN 13501-1
Long term water absorption	WL(T)2 according to EN 13165 < 2%



Certificates	
CE	λ 0,024 - 0,027 W/m.K
DOP	Utherm Roof B v3

Nr. EX-ENG-22-1

For stock- and delivery conditions: inform with UNILIN, division insulation.

UNILIN, division insulation - Waregemstraat 112 - B-8792 Waregem - T +32 56 73 50 91 - F +32 56 73 50 90
E info.insulation@unilin.com - W www.unilininsulation.com - H.R Kortrijk 87153 - VAT BE 0405 414 072