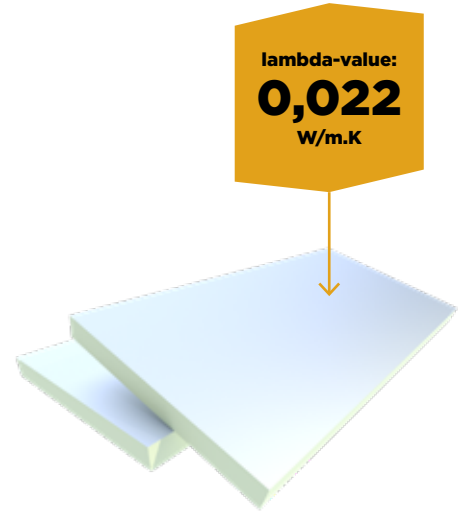


# UTHERM Concrete L

Insulation board  
for prefab

Concrete L is a PIR insulation board finished on both sides with a multilayer gastight laminate facer, alkali-(concrete) resistant.

<b>Application</b>	Insulation boards for prefab concrete elements
<b>Insulation</b>	Polyisocyanurate (PIR) <b>Declared lambda-value (<math>\lambda_p</math>):</b> <b>0,022 W/m.K</b>
<b>Facing</b>	L : multilayer gastight laminate, alkali-(concrete) resistant
<b>Dimensions</b>	Standard : 2500 x 1200 mm
<b>Edge finish</b>	Straight on the 4 sides

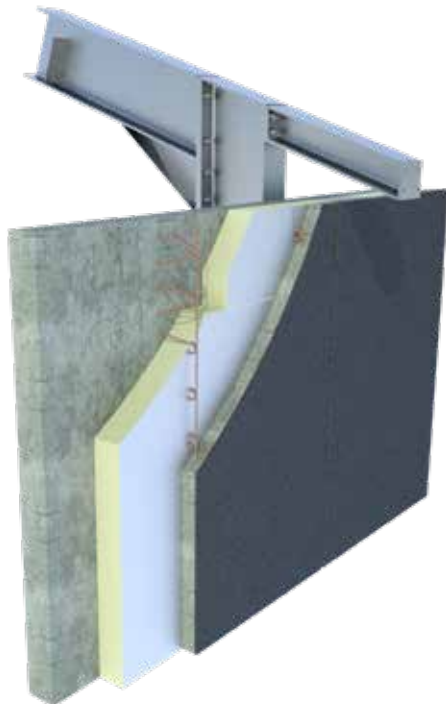


Insulation-thickness [mm]	R <sub>D INSUL</sub> value [m <sup>2</sup> K/W] CE	Boards per pack	m <sup>2</sup> per pack	Boards per pallet	m <sup>2</sup> per pallet	m <sup>2</sup> full load [= 11 pal.]	In stock	On demand*
<b>Concrete L: 2500 x 1200 mm</b>								
30	1,35	16	48,00	80	240,00	2.640,00	✓	
40	1,80	12	36,00	60	180,00	1.980,00	✓	
50	2,25	10	30,00	50	150,00	1.650,00	✓	
60	2,70	8	24,00	40	120,00	1.320,00	✓	
70	3,15	7	21,00	35	105,00	1.155,00		✓
80	3,60	6	18,00	30	90,00	990,00		✓
90	4,05	5	15,00	25	75,00	825,00		✓
100	4,50	5	15,00	25	75,00	825,00	✓	
110	5,00	4	12,00	20	60,00	660,00		✓
120	5,45	4	12,00	20	60,00	660,00		✓
130	5,90	3	9,00	18	54,00	594,00		✓
140	6,35	3	9,00	18	54,00	594,00		✓

\* Minimum order quantities and special conditions upon consultation

## TECHNICAL PROPERTIES

<b>Declared thermal conductivity :</b> $\lambda_D$ according to EN 13165:2012+A2:2016	0,022 W/m.K
<b>Compressive strength at 10% deformation :</b> CS(10/Y)150 according to EN 826	$\geq 150$ kPa (1,5 kg/cm <sup>2</sup> )
<b>Tensile strength perpendicular to the faces</b>	TR80 $\geq 80$ kPa
<b>Dimensional stability</b> 48h, 70°C, 90%RH 48h, -20°C	DS(70,90)3: $\Delta\epsilon_{l,b} \leq 2$ / $\Delta\epsilon_d \leq 6$ DS(-20,-)1: $\Delta\epsilon_{l,b} \leq 1$ / $\Delta\epsilon_d \leq 2$
<b>Deformation under compressive load and temperature conditions</b>	DLT(2) $\leq 5\%$
<b>Density of the PIR foam</b>	32 kg/m <sup>3</sup> $\pm$ 3 kg/m <sup>3</sup>
<b>Water vapour transmission resistance of the PIR foam : <math>\mu</math></b>	50-100
<b>Reaction to fire class</b>	F according to EN 13501-1
<b>Long term water absorption</b>	WL(T)2 according to EN 13165 < 2%



Certificates	
CE	$\lambda$ 0,022 W/m.K
DOP	Utherm Concrete L v2
EPD	B-EPD n° 21-0009-004-00-00-EN

Nr. EX-UK-21-1

For stock- and delivery conditions: inform with UNILIN, division insulation.

UNILIN, division insulation - Waregemstraat 112 - B-8792 Waregem - T +32 56 73 50 91 - F +32 56 73 50 90  
E info.insulation@unilin.com - W www.unilininsulation.com - H.R Kortrijk 87153 - VAT BE 0405 414 072